

PART OF SEC. 1, T.7N., R.1E., & PART OF SEC. 36, T.8N., R.1E., S.L.B.& M.

85

# POWDER MOUNTAIN WEST SUBDIVISION

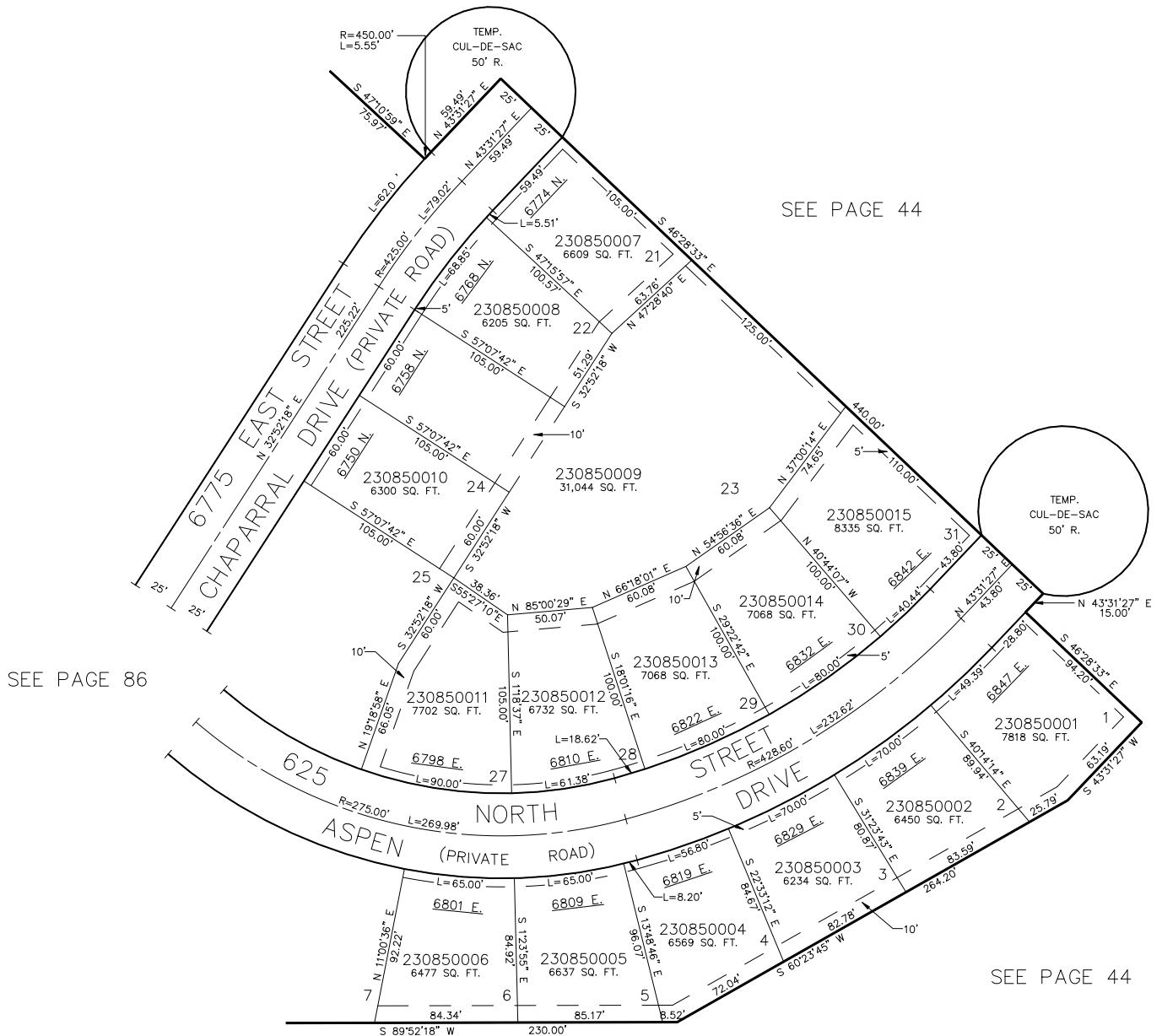
PHASE 1

TAXING UNIT: 90

LOTS 1-6, 21-24, 27-31

IN WEBER COUNTY

SCALE 1" = 50'



FOR COMPLETE ENG. DATA SEE  
ORIGINAL DEDICATION PLAT IN  
BOOK 22, PAGE 45